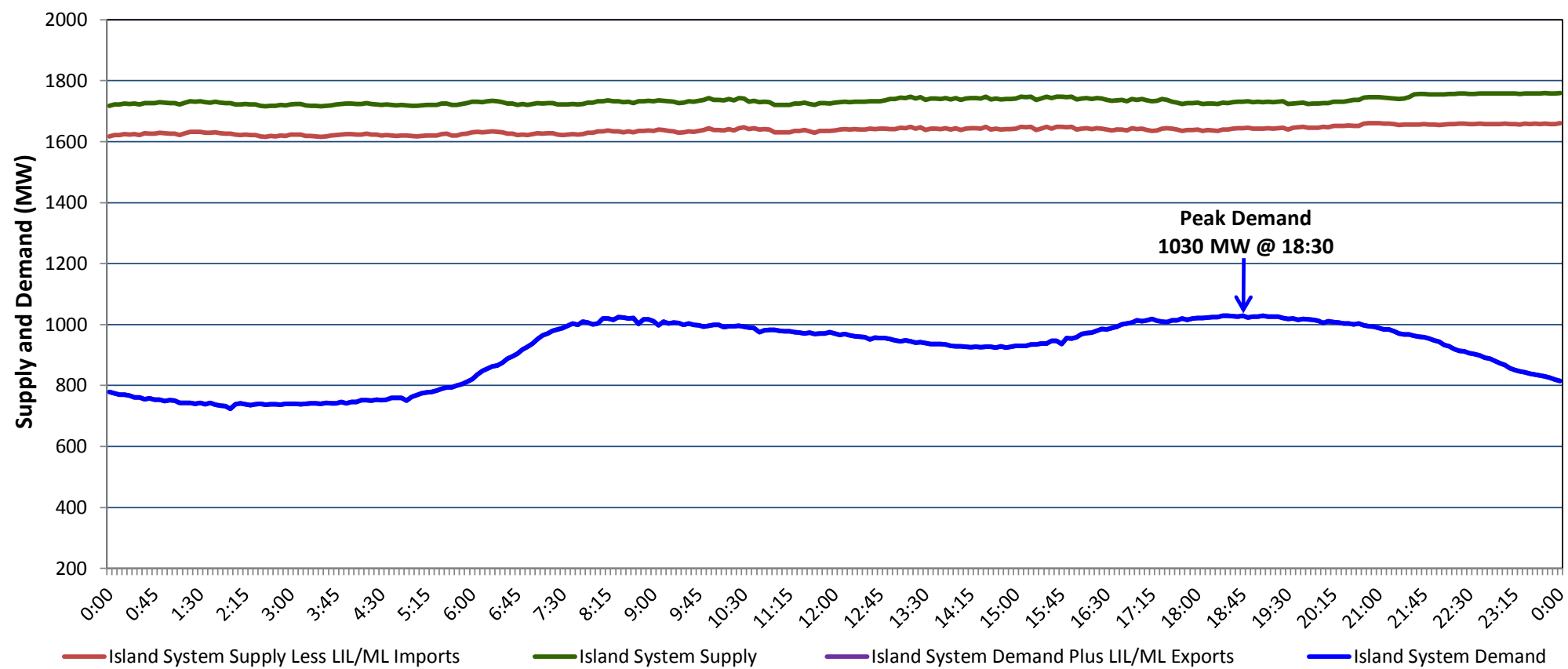


**Newfoundland Labrador Hydro (NLH)
Supply and Demand Status Report Filed Tuesday, October 29, 2019**

**Section 1
Island Interconnected System Supply, Demand & Exports
Actual 24 Hour System Performance For Monday, October 28, 2019**



Supply Notes For October 28, 2019

- A As of 1150 hours, August 18, 2019, Hinds Lake Unit unavailable due to planned outage (75 MW).
- B As of 0801 hours, September 29, 2019, Hardwoods Gas Turbine unavailable due to planned outage (50 MW).
- C As of 0830 hours, October 04, 2019, St. Anthony Diesel Plant available at 8.85 MW (9.7 MW).
- D As of 1300 hours, October 14, 2019, Bay d'Espoir Unit 2 unavailable due to planned outage (76.5 MW).
- E As of 1305 hours, October 24, 2019, Stephenville Gas Turbine available at 25 MW (50 MW).
- F As of 1441 hours, October 25, 2019, Holyrood Unit 1 available at 150 MW (170 MW).
- G As of 2107 hours, October 25, 2019, Bay d'Espoir Unit 3 available 70 MW (76.5 MW).
- H As of 0643 hours, October 26, 2019, Bay d'Espoir Unit 1 unavailable due to planned outage (76.5 MW).

**Section 2
Island Interconnected Supply and Demand**

Tue, Oct 29, 2019	Island System Outlook ³		Seven-Day Forecast	Temperature (°C)		Island System Daily Peak Demand (MW)	
				Morning	Evening	Forecast	Adjusted ⁷
Available Island System Supply: ⁵	1,684	MW	Tuesday, October 29, 2019	6	5	1,085	1,085
NLH Island Generation: ⁴	1,360	MW	Wednesday, October 30, 2019	5	3	1,095	1,095
NLH Island Power Purchases: ⁶	85	MW	Thursday, October 31, 2019	5	8	985	985
Other Island Generation:	190	MW	Friday, November 01, 2019	12	15	900	900
ML/LIL Imports:	49	MW	Saturday, November 02, 2019	3	1	1,070	1,070
Current St. John's Temperature & Windchill:	4 °C	N/A	Sunday, November 03, 2019	3	9	1,080	1,080
7-Day Island Peak Demand Forecast:	1,095	MW	Monday, November 04, 2019	14	5	1,040	1,040

Supply Notes For October 29, 2019

- Notes:
1. Generation outages for running and corrective maintenance are included. These are not unusual for power system operations. They generally do not impact customer supply. The power system operators schedule outages to system equipment whenever possible to coincide with periods when customer demands are low and sufficient supply reserves are available. However, from time to time equipment outages are necessary and reserves may be impacted.
 2. Due to the Island system having no synchronous connections to the larger North American grid, when there is a sudden loss of large generating units there may be a requirement for some customer's load to be interrupted for short periods to bring generation output equal to customer demand. This automatic action of power system protection, referred to as under frequency load shedding (UFLS), is necessary to ensure the integrity and reliability of system equipment. Under frequency events have typically occurred 5 to 8 times per year on the Island Interconnected System and the resultant customer load interruptions are generally less than 30 minutes. With the activation of the Maritime Link frequency controller during the winter of 2018, UFLS events have occurred less frequently.
 3. As of 0800 Hours.
 4. Gross output including station service at Holyrood (24.5 MW) and improved NLH hydraulic output due to water levels (35 MW).
 5. Gross output from all Island sources (including Note 4).
 6. NLH Island Power Purchases include: CBPP Co-Gen, Nalcor Exploits, Rattle Brook, Star Lake, Wind Generation and capacity assistance (when applicable).
 7. Adjusted for curtailable load, market activities and the impact of voltage reduction when applicable.

**Section 3
Island Peak Demand Information
Previous Day Actual Peak and Current Day Forecast Peak**

Mon, Oct 28, 2019	Actual Island Peak Demand ⁸	18:30	1,030 MW
Tue, Oct 29, 2019	Forecast Island Peak Demand		1,085 MW

- Notes: 8. Island Demand / LIL / ML Exports (where applicable) is supplied by NLH generation and purchases, plus generation owned and operated by Newfoundland Power and Corner Brook Pulp & Paper (Deer Lake Power, DLP).